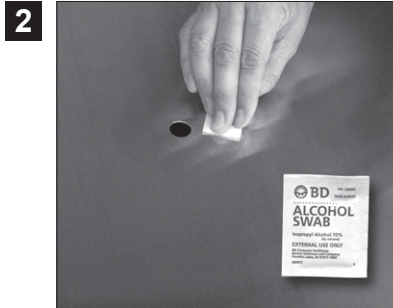


# BOLT- ON ANTENNA INSTALLATION GUIDE - SLOTTED WASHER



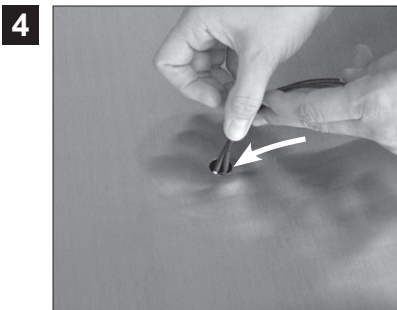
1 Make a 5/8" hole in vehicle where center of antenna will be located.



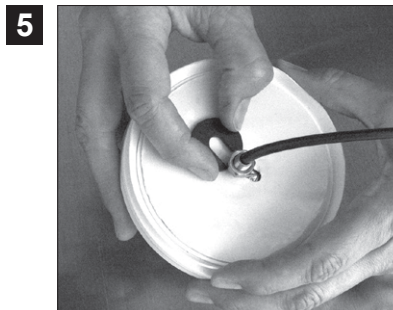
2 Where the antenna will mount to the vehicle, clean the surface with the alcohol wipe to remove dust, dirt and oil.



3 After the alcohol has evaporated, apply the adhesion promoter only to the surface where the antenna's adhesive pad will be applied.



4 While the adhesion promoter dries, pass antenna cables through the hole.



5 Loosen the nut on bottom of antenna and remove the slotted washer.



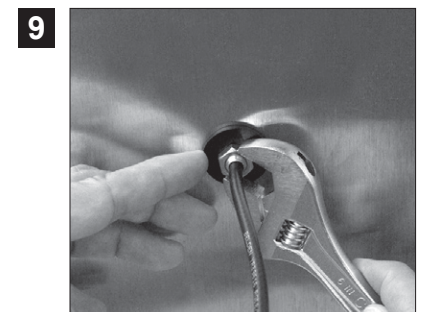
6 Remove the backing of the adhesive pad.



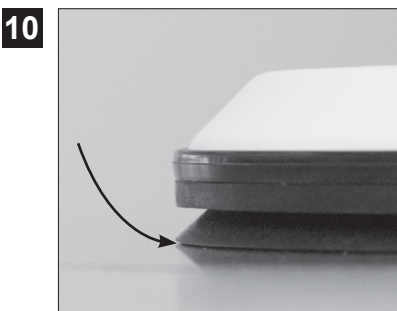
7 Using firm hand pressure, stick the antenna to vehicle passing the threaded stud and nut through the hole.



8 From inside of the vehicle, install the slotted washer and tighten the nut finger tight.



9 Press the washer against the threaded lug while tightening the nut with a 1/2" wrench. Tighten the nut approximately one to two turns.



10 Make sure gasket is seated so water and dirt can not enter under the antenna. If gasket is not seated, continue tightening nut until a tight seal is formed.