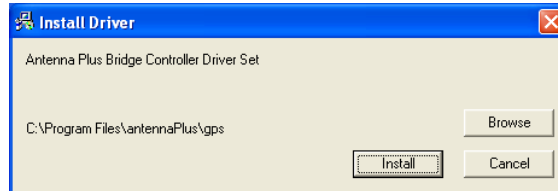


Two methods for installing USB drivers for the AntennaPlus GPS:

1) Pre-installation of USB driver.

The GPS receiver USB files can be installed prior to plugging in the USB GPS receiver for the first time. The advantage of using the pre-installer is that windows will automatically find the driver files. Browsing to the correct directory will not be required. The steps below outline how to install the USB drivers via the pre-installation program.

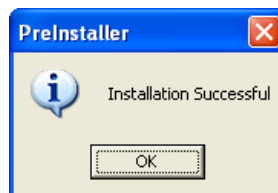
Using windows explorer, browse to the directory where the driver files reside. Run the file PreInstaller.exe.



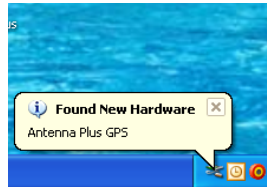
Select 'Install' to install the driver files in the directory specified.



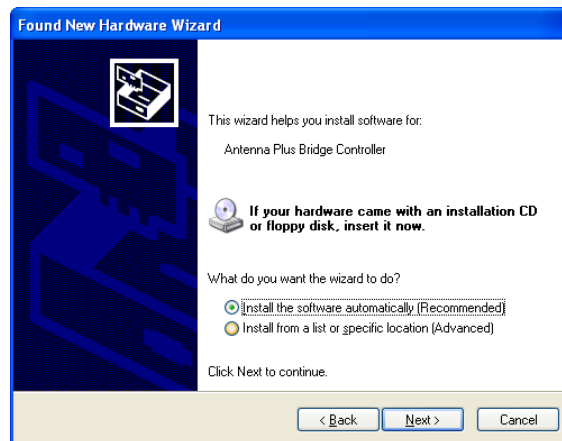
If Windows warns you that the driver is not verified, this is OK. Select 'Continue Anyway' to proceed. Two of these windows may appear. If so, select 'Continue Anyway' for both.



The installation complete screen should appear. The drivers required to communicate to the GPS receiver have now been successfully copied to your computer. Attach the GPS receiver to the PC via the USB cable. The Windows “Found New Hardware Wizard” should identify two items as shown below and start the wizard.



The above window may look slightly different depending upon the version of Windows you are running. If your window looks different, select the option that tells the wizard to look for files in a user specified directory. For Windows XP, this is the ‘No, not this time’ option.



When prompted to, select the option that installs the software automatically. Since the pre-installer was used, the wizard will find the correct files.



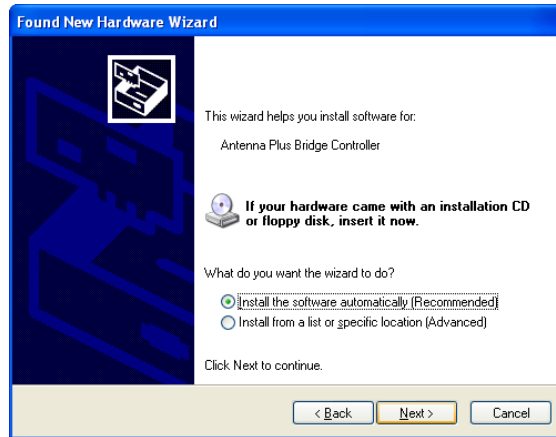
If Windows warns you that the driver is not verified, this is OK. Select 'Continue Anyway' to proceed.



The installation complete screen should appear. You are only half way done. Now Windows must install the second driver required for proper operation of the GPS receiver.



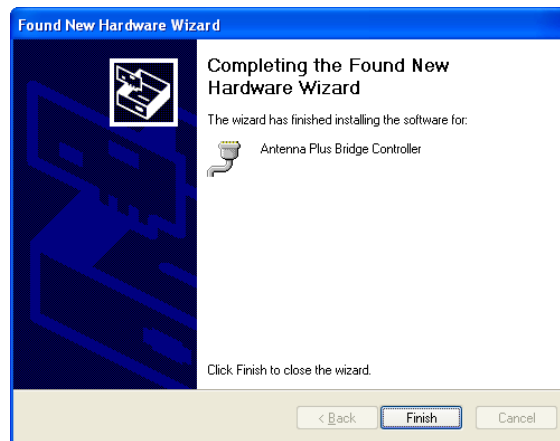
The above window may look slightly different depending upon the version of Windows you are running. If your window looks different, select the option that tells the wizard to look for files in a user specified directory. For Windows XP, this is the 'No, not this time' option.



When prompted to, select the option that installs the software automatically. Since the pre-installer was used, the wizard will find the correct files.



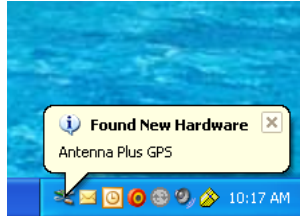
If Windows warns you that the driver is not verified, this is OK. Select 'Continue Anyway' to proceed.



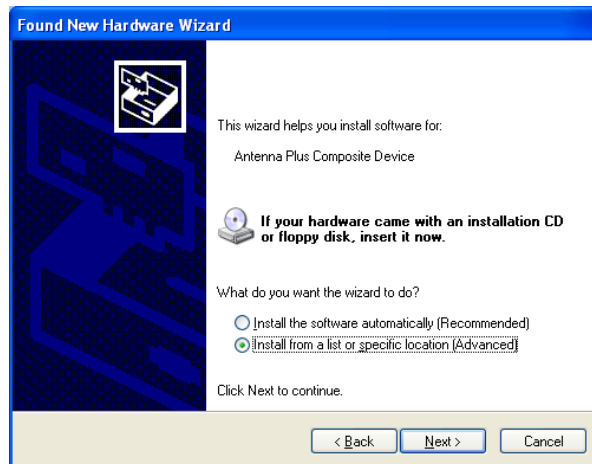
The installation complete screen should appear. The drivers required to communicate to the GPS receiver have now been successfully installed on your computer. You may now communicate to the GPS receiver via the serial port (COMx) that it has been assigned to.

## 2) Windows Auto-Detection of hardware.

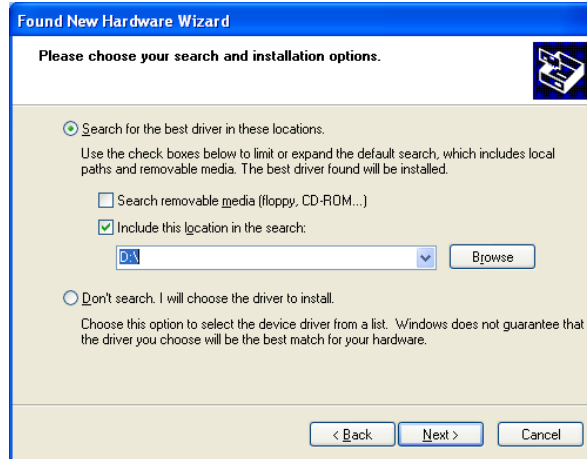
Attach the GPS receiver to the PC via the USB cable. The Windows “Found New Hardware Wizard” should identify two items as shown below and start the wizard.



The above window may look slightly different depending upon the version of Windows you are running. If your window looks different, select the option that tells the wizard to look for files in a user specified directory. For Windows XP, this is the ‘No, not this time’ option.



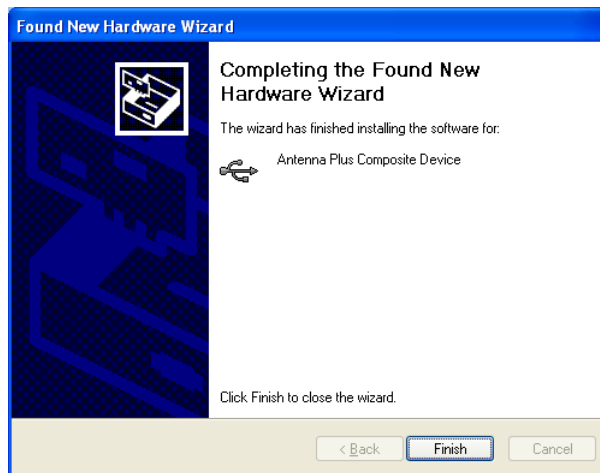
When prompted to, select the option that allows you to specify the directory in which to look for the files.



When prompted, point to the appropriate directory where the driver files reside.



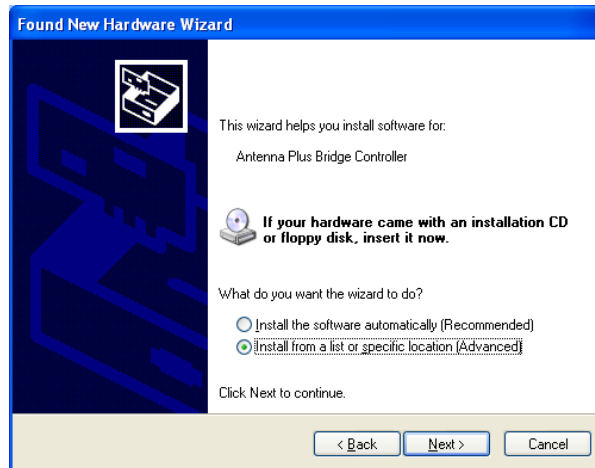
If Windows warns you that the driver is not verified, this is OK. Select 'Continue Anyway' to proceed.



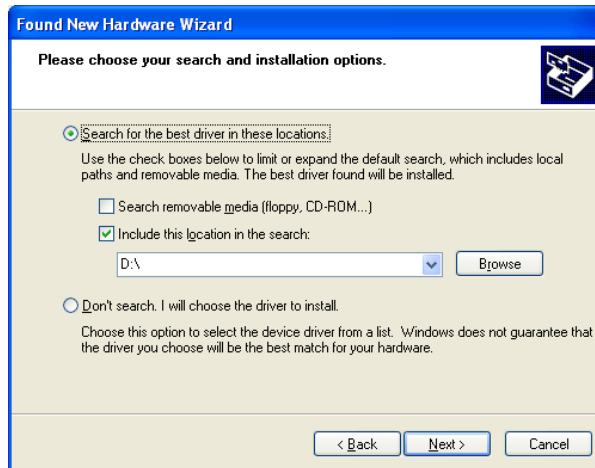
The installation complete screen should appear. You are only half way done. Now Windows must install the second driver required for proper operation of the GPS receiver.



The above window may look slightly different depending upon the version of Windows you are running. If your window looks different, select the option that tells the wizard to look for files in a user specified directory. For Windows XP, this is the 'No, not this time' option.



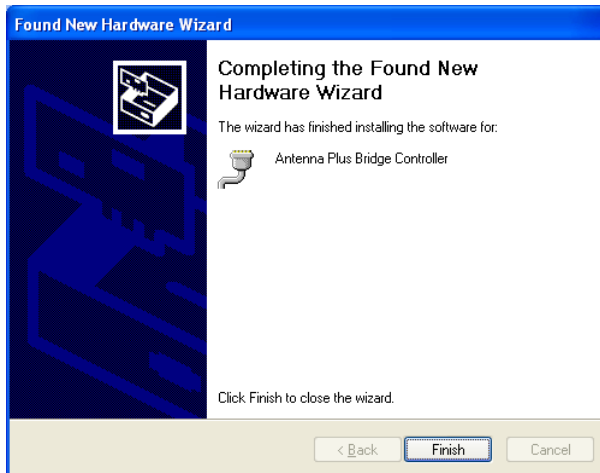
When prompted to, select the option that allows you to specify the directory in which to look for the files.



When prompted, point to the appropriate directory where the driver files reside.



If Windows warns you that the driver is not verified, this is OK. Select 'Continue Anyway' to proceed.



The installation complete screen should appear. The drivers required to communicate to the GPS receiver have now been successfully installed on your computer. You may now communicate to the GPS receiver via the serial port (COMx) that it has been assigned to.