

AP-TRIMODE COMBO ANTENNA

AP/85/18/GPS

Cellular, PCS and GPS Together In One Package

The AP-TriMode Combo Antenna is the low profile Cellular/PCS and GPS combination external antenna. Everything is in the one housing, reducing the need for multiple antennas and holes being drilled. With the built in ground plane, this antenna can be used on non-metal surfaces, and still provide optimal performance for the cellular reception.

Key Benefits:

Bigger Wireless Footprint

The AP-Tri-Mode Combo Antenna provides up to 25% more wireless coverage, depending on the geography you travel in.

Faster Data Speeds

Better reception translates to faster speeds. The data gets through the first time, correctly.

Long Product Life – Low Profile Design

The AP-Tri-Mode Combo Antenna is very durable. It withstands all of the natural elements, car washes, and being swept by tree branches.

Mounting Choices

Mounting styles include: permanent adhesive, threaded bolt and Dual-NMO; as well as magnetic mount for less permanent requirements. A metal ground plane can be built in for use with fiberglass vehicles.

One Simple Installation

The AP-Tri-Mode Combo Antenna has all of the antennas in the one housing. This means you only have one hole to drill and one installation effort.

Connects to All Major Brands of Wireless Data

Cards with external antenna ports: AirCard 881, USB Connect Mercury, Option GT Ultra, GT Ultra Express, USB760, UM175 USB, PC5750*, PC770 Express, UMW190, AD3700 Global USB, USB100, AirCard 402, AirCard 597E, AirCard 598U, Ovation U760, Merlin C777, EC360, KPC680 and all



Adhesive mount shown
Colors: Black or White

older wireless data cards with external antenna ports
(* With adapter cable from Verizon)

Docking Stations: Havis LEDCO, Gamber Johnston, Panasonic, PMT, Kodiak

Wireless Trunk and Mobile Access Routers from: Sierra Wireless, AirLink, BlueTree Wireless, Utility Associates, Junxion, Cisco MAR, and many others

Extra coverage gained with the Tri Mode Antenna



Antenna Plus LLC
9458 E Sunnyside Dr. - Scottsdale, AZ 85260
Phone: 480-657-7354 - Fax: 480-657-0204 - orders@antennaplus.com

ANTENNAPLUS
www.antennaplus.com

AP-TriMode Combo Antenna

Electrical Specifications

Frequencies:

- F1=824-896 MHz
- F2=1850-1995 MHz
- F3=1575.42 MHz

VSWR: 1.5:1 or less at resonant point

Gain: 3.0 dB

Radiation Pattern:

- OMNI Directional
- Hemispherical (GPS)

Polarization:

Vertical

Mechanical Specifications

Radome:

Glass Filled Polypropylene

Cable Length:

- 15 feet (4.5 m) (Adhesive Mount)
- 10 feet (3 m) (Magnetic Mount)

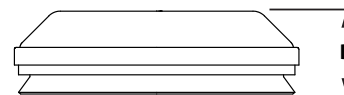
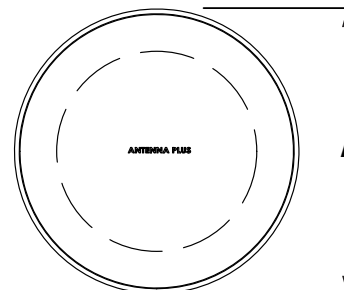
Connectors:

Contact factory for connector options.

GPS Antenna Specifications

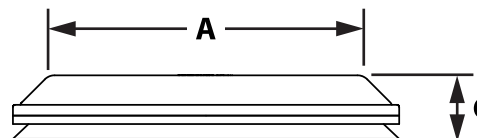
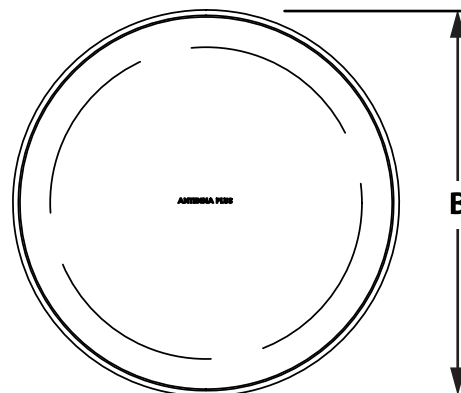
- Center Frequency . . . 1575.42 MHz
- Gain 30 dB min.
- Polarization R.H.C.P.
Right Hand Circular Polarization
- Noise Figure 2.0 max.
- Arial Ratio. 3 dB max.
- Bandwidth 2 MHz min.
- VSWR 2.0 max.
- Output Impedance . . . 50 Ohms
- Voltage 3-5 Volts
- Current 15 mA (max)

AP-TriMode Combo Dimensions
(AP/85/18/GPS)



Mount	Adhesive or Bolt
A	4.4 in (112 mm)
B	1.7 in (44 mm)

AP-TriMode Combo Dimensions
with Built in Ground Plane
(AP/85/18/GPS-B)



Mount	Adhesive or Bolt
A	5.5 in (140 mm)
B	6.9 in (175 mm)
C	1.3 in (33 mm)