

AP-CELL/WiFi COMBO ANTENNA

AP85/18/24

Three in One Low Profile Package

The AP-Cell/WiFi Antenna™ is the low profile Cellular/PCS + WiFi combination external antenna. Everything is in the one housing, reducing the need for multiple antennas and holes being drilled. This is the ideal solution to provide superior coverage and faster data throughput speeds for ruggedized laptops with a docking station.

Better Cellular/PCS - By using the AP-Cell/WiFi with a metal ground plane, the wireless signal is optimized, getting the signal outside of the vehicle, elevated and resonating at its best.

Bigger Wireless Footprint - AP-Cell/WiFi provides up to 25% more wireless coverage, depending on the geography you travel in.

Faster Data Speeds - Better reception translates to faster speeds. The data gets through the first time, correctly.

Long Product Life — Low Profile Design - The AP-Cell/WiFi is very durable and stands. It withstands all of the natural elements, car washes, and being swept by tree branches.

One Simple Installation - The AP-Cell/WiFi has all of the antennas in the one housing. This means you only have one hole to drill and one installation effort.

Antenna Plus Connects to . . . Wireless Data Cards: Sierra Wireless AirCard 597 Compass USB, AirCard 595, AirCard 597E, AirCard 580, USB Connect Mercury 885, AirCard 881, USB Connect 881, AirCard 875, AirCard 860; NovAtel S720, S620, V620, USB727, EX720, Ovation U727, V640; Kyocera KPC650; Option GT Max, GT Max Ultra, GT Max Ultra Express; UM150, UM175, PC5750 (with adapter from Verizon), Sony GC86



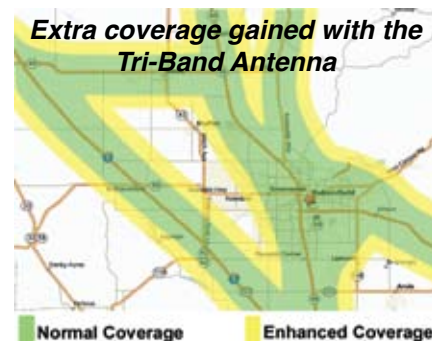
Available in Adhesive Mount
or Bolt-On Style
Colors: Black or White

Ruggedized Computers with Embedded Wireless: Panasonic Toughbooks

Docking Stations: Gamber Johnson, LedCo, PMT, Panasonic, and Kodiak

Ruggedize Modems: Sierra MP881-W, MP595-W, MP875, MP595, AirLink Pinpoint X, AirLink Raven, BlueTree Wireless 5000/6000 series

Mobile Access Routers: In-Motion, Cisco, Utility Associates, Junxion, and more



Antenna Plus LLC
9458 E Sunnyside Dr. - Scottsdale, AZ 85260
Phone: 480-657-7354 - Fax: 480-657-0204 - orders@antennaplus.com

ANTENNAPLUS
www.antennaplus.com

Tri-Band Antenna

Electrical Specifications

Frequencies:

F1=824-896 MHz

F2=1850-1995 MHz

F3= 2400-2484 MHz

VSWR: 1.5:1 or less at resonant point**Gain:** 3.0 dB**Radiation Pattern:**

OMNI Directional

Hemispherical (GPS)

Polarization:

Vertical

Mechanical Specifications

Radome:

Glass Filled Polypropylene

Cable Length:

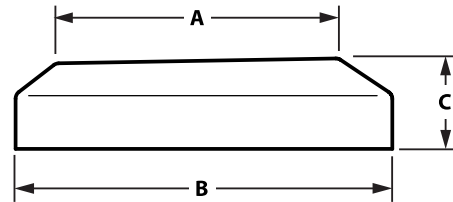
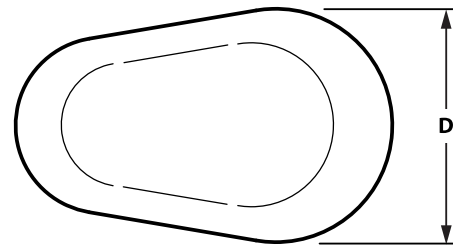
15 feet (Adhesive Mount)

10 feet (Magnetic Mount)

Connectors:

Contact factory for connector options.

Cellular/PCS-WiFi Antenna Dimensions

(AP85/18/24)

Mount	Adhesive, Magnet or Bolt
Description	Teardrop Shape
A	4.0 in
B	5.5 in
C	1.3 in
D	3.5 in